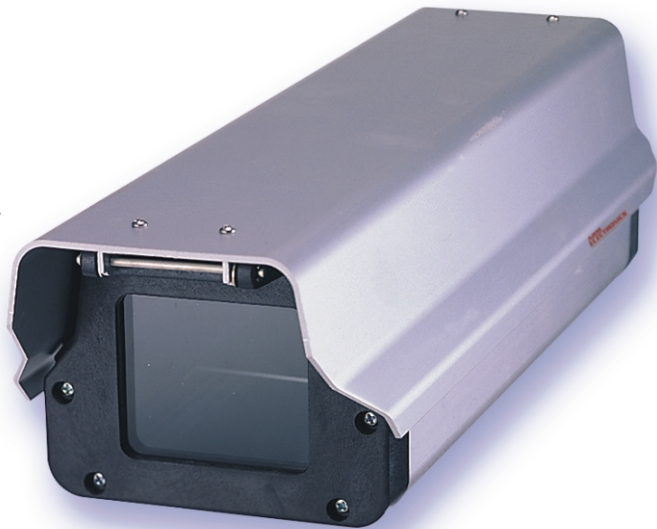


# OCH1 - OCH2

## Camera Housings

### Product Features

- Metal construction
- Clamshell design
- Lockable clasp
- Recommended mount: OCHWMT



### Specifications

<b>EXTERNAL SIZE DxWxHmm</b>	320 x 133 x 105 DPEAK - 385
<b>MAX SIZE CAMERA DxWxHmm</b>	250 x 75 x 90
<b>WEIGHT</b>	1635g
<b>CLEAR WINDOWS AREA</b>	67 x 57
<b>PLATE GLASS</b>	3 mm
<b>CONSTRUCTION</b>	Die cast aluminum
<b>HEATER</b>	OCH2 includes 24VAC heater
<b>FAN</b>	OCH2 includes 24VAC blower

Specifications subject to change without notice.

2025 Opportunity Drive #1 Roseville, CA 95678  
Toll free - (888) 771-4544 ● Phone - (916) 787-1100 ● Fax - (916) 787-1010  
sales@armelectronics.com ● www.armelectronics.com

**ARM**  
**ELECTRONICS**